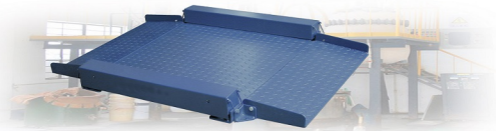


Low-Profile Carbon-Steel Platform



Features:

- * Carbon-steel construction, Powder-coated surface, anti-skidding design.
- * Hermetically sealed alloy steel load cell.
- * Force transfer mechanism can be reset automatically.
- * The low overall height is 35mm~45mm, allows smooth driving via ramps.
- * Short ramp with 300mm.

Accessories:

* Ramp



Powder-coated
(For dry environments)

* Scale stand



Stainless steel
(for fastening the
terminal on the
weighing platform)

Specifications:

Model	Dimensions (mm)	Weight Range			
		300kg	600kg	1000kg	1500kg
PC0808	800x800	*	*	*	*
PC1010	1000x1000	*	*	*	*
PC1212	1200x1200	*	*	*	*
PC1515	1500x1500	*	*	*	*
Verification division value		0.1kg	0.2kg	0.2kg	0.5kg
Accuracy Level		C3			
Working temperature		platform & load cell: -35℃~ +65℃			
Relative humidity		≤95% (Need no condensation)			
IP		Load cell IP65			
Load cells		ZEMIC H8C			



Model	L	W	H	L1	W1	H1
PC0808-0.3	800	800	35	1416	1002	114
PC0808-0.6	800	800	35	1416	1002	114
PC0808-1.0	800	800	35	1416	1002	114
PC1010-0.3	1000	1000	35	1616	1202	114
PC1010-0.6	1000	1000	35	1616	1202	114
PC1010-1.0	1000	1000	35	1616	1202	114
PC1010-1.5	1000	1000	45	1616	1202	114
PC1212-0.3	1200	1200	45	1816	1402	114
PC1212-0.6	1200	1200	45	1816	1402	114
PC1212-1.0	1200	1200	45	1816	1402	114
PC1212-1.5	1200	1200	45	1816	1402	114
PC1515-0.6	1500	1500	45	2116	1702	114
PC1515-1.0	1500	1500	45	2116	1702	114
PC1515-1.5	1500	1500	45	2116	1702	114

* Non-standard products can be designed upon customer's requirements, or manufactured as client's drawings.

- All kinds of non-standard platforms & accessories can be customized.

- Different brands load cells are optional.

Zemic load cell is installed if no special requirements.

Premium Weighing Platform

Stand-alone weighing platforms for different environments